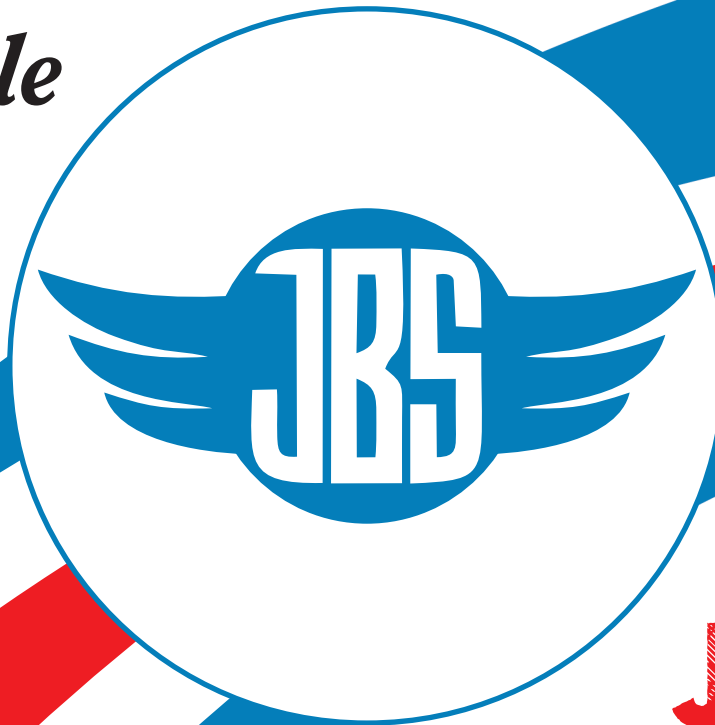
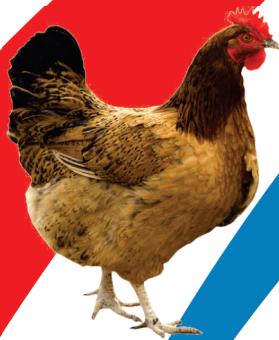


Division of Cattle & Poultry Feed Supplement



JAIVIDUT
BIO SCIENCE

House No.-113 Vaddhari,
Village-Vata, Tahsil-Bodeli,
District-Chhotaudepur, Gujrat
Mail: jaividutbioscience@gmail.com

EMPOWERING ANIMAL HEALTH THROUGH NUTRITION EXCELLENCE



COMPOSITION : EACH ML. CONTAINS :

Vitamin H (Biotin)	100 mcg
Vitamin A	20000 IU
Vitamin D3	10000 IU
Vitamin E	50 mg
Vitamin C	5 mg
Zinc	20 mg
Cobalt	200 mcg
Energy Value	0.65 Kcal
Vitamin B12	20 mcg

ACTION-H

Gold

*Multivitamins Liq. with Vitamin H
for Livestock & Poultry Feeding*



FEEDING SCHEDULE :

Large Animals : 10 ml. daily on chapati
Small Animals : 5 ml. daily on chapati
Chicks : 5 ml./100 birds
Layers : 10 ml./100 birds
or as directed by the veterinarian.



**जानवरों के लिए
तरल खुराक**

UNIQUE BENEFITS :

- Improves udder growth
- Improves milk holding capacity of teats
- Improves calf growth
- Brings shine on skin coat in male goat (buck) and male sheep (ram)
- Improves growth and egg production in poultry



Packing: 1 Ltr & 500 ml.

Cattle Feed Supplement



Composition:

Each ml contains:

Kamila churn, Arvind Asav Peach leaf extract, Vidanga rist, Arandi Oil, Garlic Oil, Clove Oil, Pumpkin Seeds, Ajwain, Neem Oil, Turmeric, Anar Chilka, Giloy, Amla, Kala Namak.



ANTIQUE-H

एंटीक-एच

LIQUID

A herbal liquid formulated with natural antiparasitic ingredients like garlic, and neem helps eradicate intestinal parasites and supports digestive health.



30ml
LIQUID

**Useful in Killing
Stomach Worms**



Dosage:

30 ml Single use for Large Animal
15 ml Single use for Small Animal
or as directed by the veterinarian.



Benefits:

- Expel the worms in comparison to the chemical drug which contains just enough poison to kill the worms.
- Completely safe to use throughout pregnancy and lactating animals.
- Does not destroy ruminal microflora.
- Expel the worms & Improve fertility.
- Dewormer is extensively used in Animal to treat tapeworms, roundworms, hookworms, and whipworms.

CATTLE FEED SUPPLEMENT

ANTIQUE-H

A HERBAL DEWORMER/ORAL SUSPENSION

COMPOSITION (Each 100 ml. contains)

Calcium Lactate	120 mg.
Potassium Chloride	1860 mg.
Sulphate	300 mg.
Sodium Chloride	292 mg.
Sodium acid phosphate	624 mg.
Sodium Citrate	4215 mg.
Dextrose monohydrate	40000 mg.



ACTIVE-ELECTRO

TONIC

Electrolyte Liquid For Cattle & Poultry

**DIRECTION FOR USE**

Cow/Buffalo/Horse in Enteritis : 200 ml. daily
Calves : 100 ml. daily for 5 days
Horses after Exercise : 200 ml daily
Dogs in Enteritis : 50 ml. daily
Poultry : (Per 1000 birds)
Chicks : 200 ml., Growers : 300 ml.
Layers : 500 ml.

INDICATION :**POULTRY**

- Improves Shell Thickness
- Overcomes stress period
- Reduces shell fracture
- Optimize calcium & phosphorus
- Useful in coccidiosis

CATTLE

- Overcomes Stress Period
- Prevent Dehydration Stroke
- Maintains Electrolyte Balance
- Regulates Bmr
- Useful In -ve energy balance
- Useful In Ketosis
- Useful In Diarrhoea & Hypocalcemia



Packing: 1 Ltr & 500 ml.



Cattle Feed Supplement

Usages :

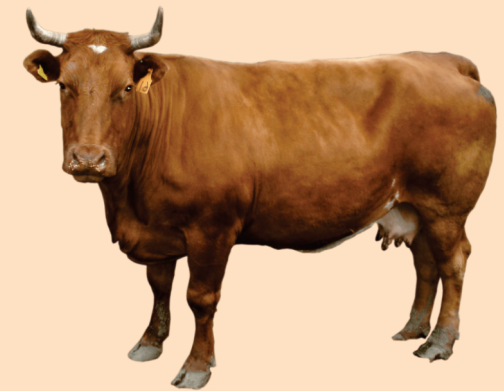
225 ml soon after A.I. or
as directed by Veterinarian



Ensure the conception with

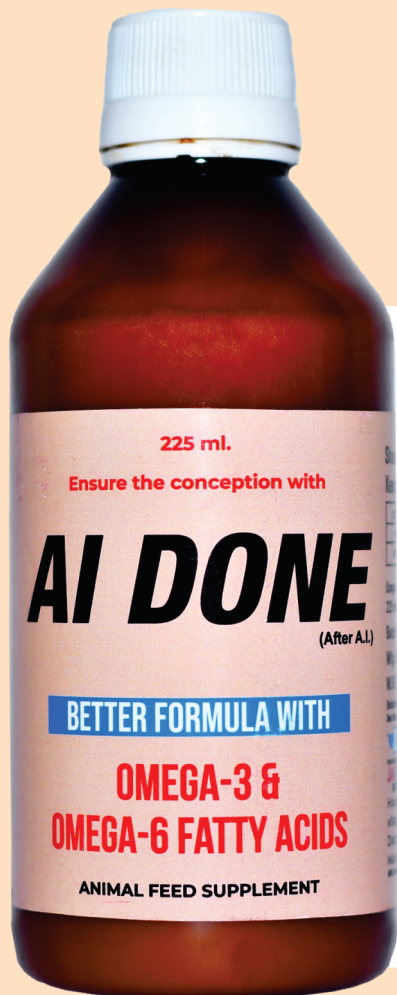
AI DONE

(After A.I.)



ए.आई. में गर्भाधान दर बढ़ाने में सहायक
एवं सफल गर्भाधान हेतु

BETTER FORMULA WITH
OMEGA-3 &
OMEGA-6 FATTY ACIDS



लाभ :

ए.आई में सहायक है।
बच्चेदानी की सुरक्षा में सहायता करता है।
नर पशुओं के शुक्राणुओं की मात्रा बढ़ाता है।
गर्भधारण में सहायक है।

Packing: 225 ml.

ANIMAL FEED SUPPLEMENT

COMPOSITION : EACH 100 GM. CONTAINS

Fermented live yeast culture with	
Digestive Enzymes	36.5 gm.
Bacillus Amyloliquefaciens	15.8 Billion CFU
Bacillus Subtilis	15.8 Billion CFU
Lactobacillus Acidophilus	3.5 gm.
Aspergillus oryzae	6 gm.
Propionibacterium Freudenreichii	15.8 Billion CFU
HSCAS Base	q.s.



All is Well

HELPFUL IN :

- ACIDOSIS
- CALF SCOUR/ DIARRHOEA
- OFF FOOD
- RECOVERY FROM ILLNESS
- ABOMASAL CONDITIONS
- SUPPORTIVE WITH ANTIBIOTICS TREATMENT



DIGESTIVE POWDER FOR MAINTENANCE OF INTESTINAL HEALTH & DUNG CONSISTENCY



FEEDING SCHEDULE :

Cattle : 30 gm. twice daily

Calf : 15 gm. twice daily

Equine : 30 gm. twice daily

Sheep/Goat/Swine : 10 gm. daily

or as directed by the veterinarian.



**Packing
300 gm.**



CATTLE FEED SUPPLEMENT





ANTIDOTE

LIQUID

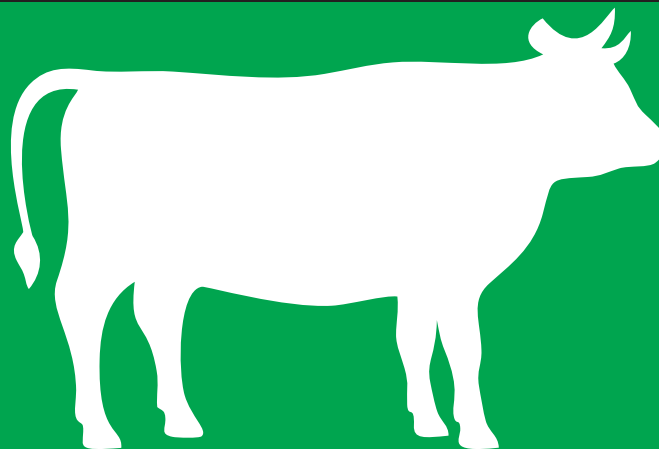
ACTIVATED CHARCOAL, EPSOM SALT, MINERALS
WITH OSMOTIC LAXATIVE SUSPENSION

ACIDOSIS

BLOAT

IMPACTION

Packing:
100 ml & 500 ml.



POISONING

GAS

INDIGESTION

CATTLE FEED SUPPLEMENT

Composition :

Each ml. contains :	
Activated Charcoal	500 mg.
Osmotic Laxative	500 mg.
Metamucii	500 mg.
Excipients	q.s.

Feeding Schedule :

Large Animal : 1-2 ml./Kg. body weight.
(500 ml. as One Dose)
Small Animal : 1-2 ml./Kg. body weight
Repeat after 12 hours or as needed.

INDICATIONS :

- * Poisoning due to insecticides, herbicides, organic chemicals and drug overdose.
- * Digestive upsets : Impaction, Bloat & Tympany.

ANTIDOTE

LIQUID





BioMin[®] Gold

COMPOSITION:

MACRO MINERALS

Calcium	300 gm
Phosphorus	1500 mg

TRACEMINERALS

Copper	3.5 gm
Cobalt	150 mg
Iron	2 gm
Iodine	500 mg
Manganese	3 gm
Sodium selenite	10 mg
Zinc	2 gm
Bioactive chromium	20 mg

AMINO ACIDS

L-Lysine	1000 mg
DL Methionine	200 mg

HERBS

Asparagus racemosus	50 gm
---------------------	-------

LIVE YEAST CULTURE

Live lactobacillus spores	200 million
---------------------------	-------------

VITAMINS

Vit A	1000000 IU
Vit D3	4000000 IU
Vit E	300 mg
Vit K	0.5 mg
Vit B12	2.5 mcg
Choline Chloride	1000 mg
Nicotinamide	1000 mg

ENZYME COMPLEX

Xylanase, Alpha-amylase, Beta-amylase, Trypsin, PROBIOTICS: Propionibacterium freudenreichii	1000 mg
Saccharomyces cerevisiae	12000 million CFU
Lactobacillus	6000 million CFU

INDICATIONS:

- ♦ Infertility ♦ Repeat Breeding
- ♦ Anoestrus ♦ Improving FAT% of Milk
- ♦ Improving the Immune Status of Animals During Stress
- ♦ Improving Health and Production
- ♦ Better Health, Performance, and Productivity of Pigs

CATTLE FEED SUPPLEMENT
NOT FOR HUMAN USE
NOT FOR MEDICINAL USE



Glycine Chelated Mineral Mixture for Livestock



Glycine-Chelated Mineral Blend With Microbial Culture, Enzymes, Probiotics, Bioactive Chromium, Chelated Minerals, and Vitamins

FEEDING SCHEDULE:

Calves: 10 to 20 gm per day

Cattle: 30 gm per day in feed

Swine: 25 gm per day in feed

Poultry: 2 gm per 100 birds

MIXING RATIO (% in cattle feed)



Packing: 1 kg, 5 kg & 20 kg.



CATTLE FEED SUPPLEMENT



BIOHEAL-R

Bolus

Tissue Repair Formula



All-in-One
Support for Mastitis!

Composition

A biological blend of Essential trace elements, Minerals, Vitamins, Natural antibacterial, Ionophoric antibiotic, Anticoagulant, Proteolytic enzyme, Bile acid binding agent, Acid-metabolizing enzyme, Protein-digesting enzyme & Antioxidants.

Indications

BIOHEAL Time Release Bolus supports wound healing and tissue repair in animals. It promotes faster recovery from cuts, surgical wounds, fractures, udder/teat injuries, hoof disorders, and skin conditions. It aids healing in cases like mastitis, foot-and-mouth disease, and general tissue trauma, and provides nutritional support for skin and connective tissue integrity.

Recommendation

1 Bolus per day orally for minimum 5 - 7 days

**FIBROSIS / FMD / CLINICAL & SUB-CLINICAL
MASTITIS / ACUTE MASTITIS / METRITIS /
DEGNALA / AFTER SURGERY / WOUND HEALING**

ANIMAL FEED SUPPLEMENT



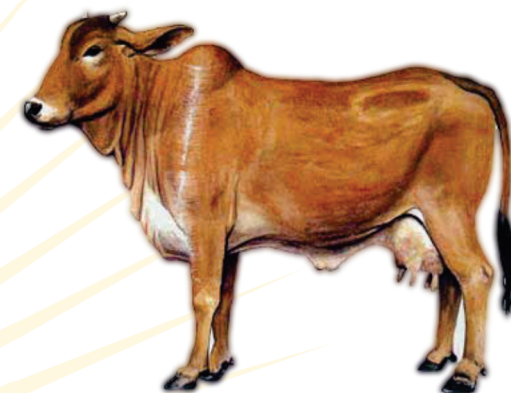
PRESENTATION:
SINGLE BOLUS PACK



ENERGY-BOOST

LIQUID

MILK BOOSTER FOR CATTLE
ENERGY BOOSTER FOR EQUINE
SOLUTION FOR KETOSIS



MILK BOOSTER FOR CATTLE

SOLUTION FOR KETOSIS

ENERGY BOOSTER FOR EQUINE

INDICATIONS :

- Pre-partum • Peak lactation
- Post-partum • Ketosis

COMPOSITION : EACH 1 LTR. CONTAINS :-

Gluconeogenic precursors fortified with Vitamin E 2500 mg, Vitamin. D3 2500 I.U., Pantothenic acid 190mg, Niacinamide 10 mg, Vitamin B6 170 mg, Vitamin B2 165 mg, Vitamin B12 600 mcg Hydrated trisodium citrate 75 mg, Lactic acid 20 mg, Lactose 1.50 gm



Packing:
600ml & 1 Ltr.

FEEDING SCHEDULE :

100-200 ml daily for livestock. or as directed by the Veterinarian

BENEFITS :

ENERGY-BOOST improves blood glucose level
ENERGY-BOOST prevents parturition related disorders
ENERGY-BOOST prevents ketosis
ENERGY-BOOST augments milk production

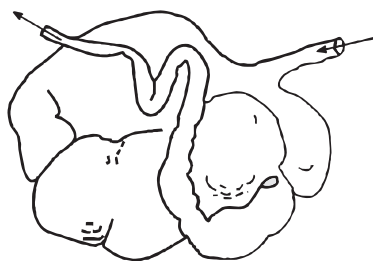
लाभ :

पशुओं में रोगों से लड़ने में सक्षम है।
दूध बढ़ाने में सहायक है।
पशुओं में प्रसव के दौरान होने वाले रोगों से बचाता है।
पशुओं को तनाव मुक्त करता है।

ENERGY-BOOST
LIQUID

CATTLE FEED SUPPLEMENT

ENERGY-BOOST
LIQUID



JaiviGold

DIGESTIVE BOLUS FOR RUMINANTS



EACH BOLUS PROVIDES :

sacchromyces cervisiae	25 million cfu
lactobacillus sporogenes	20 million cfu
Aspergillus sporogenes	20 million cfu
Ferrous sulphate	250 mg
Copper sulphate	500 mg
Cobalt sulphate	100 mg
Zinc sulphate	200 mg
Nuxvomica	500 mg
Sodium bicarbonate	500 mg
Dextrose	500 mg
DL-methionine	1 gm
Nicotinamide	200 mg
Cobalt chloride	100 mg
Niacin	500 mg
Amino acids	1 gm
Liver extract	5 mg

FEEDING SCHEDULE :

Large Animal : 1-2 bolus daily
Small Animal : 1/2 bolus daily
or as directed by the Veterinarian

PROBIOTICS ENZYMES & AMINO ACIDS CONCENTRATE



4 x 1 STRIP BOLUS



CATTLE FEED SUPPLEMENT

INDICATIONS :-

- Maintains normal pH of milk.
- Prevents re-occurrence of mastitis
- Repairs the damaged tissues of udder.
- Improves milk production.
- Improves milk quality

Usage :-

50 ml. Twice a Day for 5 days or
As directed by veterinarian



Packing:
500 ml.

MASTI-OUT

Liquid



*A Unique formula for control of Mastitis with Herbs,
Trisodium Citrate, Citric Acid & Vitamin A, D3*

Each 50ml contains :	
Glycyrrhiza globra	200 mg
Curcuma Longa	410 mg
Tinospora Cordifolia	400 mg
Tankan Bhasam	220 mg
Psoralea Corylifolia	200 mg
Argemone Mexicana	425 mg
Asperagus Recemosus	400 mg
Vermonia Anthelmintica	400 mg
Neem Ext.	2000 mg
Citric Acid	210 mg
Sod. Citrate	12 gm.
Vitamin A (Natural)	200000 I.U.
Embllica Officinallis (Natural vitamin-c)	425 mg
Vitamin D3 (Natural)	42000 I.U.



MASTI-OUT Liquid

CATTLE FEED SUPPLEMENT

MASTI-OUT Liquid

INDICATION:

- ♦ Mastitis ♦ Teat Tumor
- ♦ Teat Chord ♦ Teat Spider
- ♦ Pus Formation
- ♦ Hard Milkers
- ♦ Less Milk in Udder
- ♦ Inflammation of Teat



MASTI-OUT

Powder

Experience the Advanced
Power of Trisodium Citrate
in Our Ideal Formulation



COMPOSITION Each 60 gm Contains: (When Packed)

Potassium Iodide	7 gm	Vitamin H	25 mcg
Trisodium Citrate	35 gm	Aloe Vera	100 mg
Vitamin A	4000 IU	Zinc Sulphate	150 mg
Amino Nitrogen	100 mg	Ocimum Sanctum	1000 mg
Vitamin E	1500 IU	Azadirachta Indica	4000 mg
Lacto Bacillus	200 million CFU	Bromelain	320 mg
Live Yeast Culture	7500 million CFU	Sodium Selenite	10 mg
Vitamin K	400 IU	Base	q.s.
Vitamin C	750 mg		

फायदे

- ♦ पशुओं के दूध का pH (6.5) सामान्य करता है।
- ♦ थनों के सभी इन्फेक्शनों को खत्म करता है।
- ♦ थनों में सूजन, मवाद व खून आना।
- ♦ दूध में छेछड़े आना, गाठ होना आदि में काम करता है।
- ♦ एक थन में दूध कम आना।
- ♦ दूध उत्पादन बढ़ाने के लिए।
- ♦ पशु के पावास लाने में मदद करता है।

USAGE:

30 gm twice daily orally for 3-5 Days
or as directed by the Veterinarian



Packing:
60 gm.

थनैला रोग के उपचार के लिए

**ANTI MASTITIS
FEED SUPPLEMENT**



NUTRI-FERROL

**Malt Based Vitamins, Iron,
Copper & Calcium Supplement
for Swine, Cattle & Poultry**

COMPOSITION : EACH 21 GM. CONTAINS

Malt Extract	4.52 gm.
Calcium Gluconate	360 mg.
Ferric Ammonium Citrate	300 mg.
(Eq. To 64.5 Mg. of Iron)	
Copper Sulphate	100 mg.
Cobalt Sulphate	1.5 mg.
Zinc Sulphate	50 mg.
Cholecalciferol	3600 I.U.
Nicotinamide	45 mg.
Biotin	75 mcg.
Folic Acid	1.5 mg.
Choline Chloride	1500 mg.
Liver Extract	200 mg.
Cynocobalamin	15 mcg.
Base	q.s.

FEEDING SCHEDULE :

Cattle, Buffalo & Horse: 30-50 gm. daily.
Calves/Sheep/Goat : 10-20 gm. daily
Camel : 10 gm. /100 Kg. body weight.
Swine : Adult 25-30 gm. daily
Grower : 5-10 gm. daily
Poultry : 30-40 gm./100 birds in drinking water

INDICATION

Proper feed utilization, general debility, stunted growth, iron deficiency, anaemia, rickets, Osteomalacia, Anorexia, convalescence, pregnancy, milk fever, lactation stress etc. For supportive therapy after Haemoprotozoan diseases. Improve Egg production in poultry.



INDICATION

Iron Deficiency in Cattle & Equine

Haemoprotozoan diseases.

Iron Deficiency in Poultry



CATTLE FEED SUPPLEMENT

Packing: 450gm, 1 Kg & 2.5 Kg.



**COMPOSITION** Each 100 ml Contains: (When Packed)

Calcium	7200 mg
Phosphorus	3600 mg
Vitamin A	14400 IU
Vitamin D3	15000 IU
Vitamin B12	150 mcg
Vitamin E	50 mg
Vitamin H (Biotin)	5 mg
Chelated Zinc	1600 mg
Potassium Iodide	300 mg
Chelated Copper	200 mg
Silymarin	600 mg
Jivanti	1000 mg
Shatavari	1000 mg
Dextrose	1000 mg
Energy Value	670 KJ
Milk Enhancing Herbal Ext.	q.s.
Bifidogenic Factors	q.s.

PICKUP GOLD

**Infused With Metho-Chelated Minerals
and Plant-based Herbs**



**Triple Strength
Calcium**

ADVANTAGES:

- Improve the Milk Production
- Improve the Growth Rate in Young Ones
- Prevent Milk-Fever, Rickets, Osteoporosis
- Prevent Calcium Deficiency During Lactation
- Form Strong Bones
- Prevent Negative Energy Balance

KEEP IN COOL & DRY PLACE

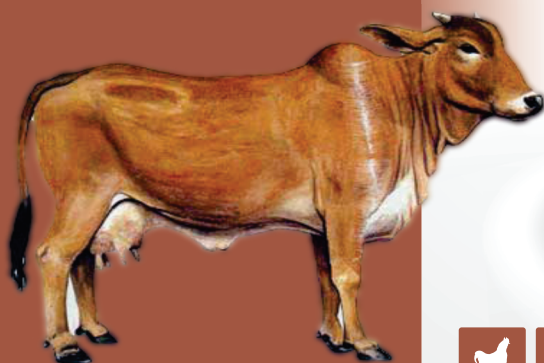
Shake Well Before Use

FEEDING SCHEDULE:

Cow, Buffalo, Horse & Camel: 50 to 100 ml daily

Sheep, Goat & Calf: 10 to 20 ml daily

दुधारू पशुओं के लिए
ट्रिपल स्ट्रेंथ कैल्शियम



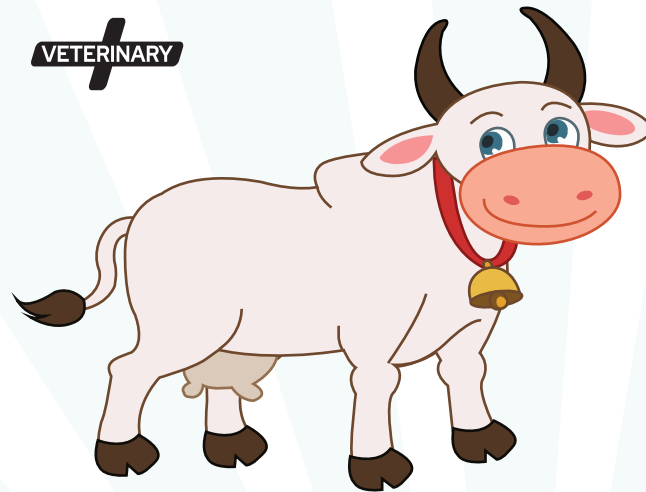
Packing:

1 Ltr, 5 Ltr, 10 Ltr & 20 Ltr



PRO-FIT Powder

A Herbal Supplement to Stop Prolapse



BENEFITS:

- Helps in Shrinkage of the Prolapsed Organ, Which Helps to Put the Organ Back to Its Anatomical Position.
- Increases the Uterine Muscle Tone and Strengthens the Uterus, Thus Reducing the Chances of Recurrence.
- Safe for Pregnant Animals.
- Effective in Both Pre-partum and Post-partum Prolapse.

FEEDING SCHEDULE:

15 gm twice daily
or as directed by the veterinarian.

For Use in Uterine/Vaginal Prolapse

COMPOSITION Each 100 gm Contains:

Nag Bhasma	1.5 gm
Yashad Bhasma	1.5 gm
Bang Bhasma	1.5 gm
Symplocos Racemosa	20 gm
Resin Flava	10 gm
Soda Biboras	20 gm
Tinospora Cordifolia	5.5 gm
Saraca Asoca Bark	15 gm
Asoca Bark	15 gm

CATTLE FEED SUPPLEMENT

NOT FOR HUMAN USE

NOT FOR MEDICINAL USE

INDICATIONS:

- Vaginal Prolapse
- Uterine Prolapse

Packing: 500 gm.

गाय, भैंस के पिछा दिखाने के उपचार हेतु

Packing: 300 gm.



ADMINISTRATION:

- ◆ Remove the Seal of the Bottle
- ◆ Hold the Head of the Animal in a Normal to Slightly Elevated Position
- ◆ Carefully Place the Nozzle Into the Back of the Mouth
- ◆ Administer the Entire Content of the Bottle by Slowly Squeezing
- ◆ Do Not Administer to Animals Unable to Swallow



PICKUP-GEL

High Potency Double Strength Calcium Gel



**LIQUID FEED SUPPLEMENT
FOR USE IN LIVESTOCK**

300 gm.

COMPOSITION Each 100 gm Contains:

Ionic Calcium	7200 mg
Phosphorus	3600 mg
Vitamin D3	4000 IU
Vitamin B12	400 mcg
Biotin	200 mg
L-Arginine	160 mg
Cobalt	100 mg
Manganese	10 mg
Zinc	250 mg
Galactagogue	5%
Ashwagandha	2000 mg
Jivanti	2000 mg
Shatavari	2000 mg
Energy Value	100 kcal

ADVANTAGE:

- ◆ Prevention of Milk Fever
- ◆ Fulfilling the Instant Calcium Requirement Immediately After Parturition
- ◆ Improves Milk Production
- ◆ Improves Liver Function
- ◆ Provides Balanced Energy and Stamina

DIRECTION FOR USE:

150 Gm 6-12 Hours Before Calving
150 Gm Within 6-12 Hours After Calving
50-100 Gm Daily



PLANT-LIV

HERBAL LIVER TONIC

FEATURES:

- Avoid health hazards
- Enhance immunity
- Hygienically processed
- Effective usage
- Safe to consume

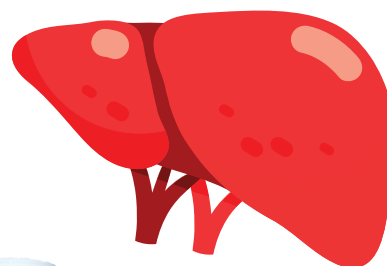
USAGE:

Cows, Buffaloes : 50 ml twice daily
Calves : 20- 25 ml twice daily
Sheep & Goat: 10- 15 ml twice daily
Poultry : 10 ml/100 Birds per day

COMPOSITION :

10 ml each contains

Vitamin B1	50 mg
Vitamin B2	1.5 mg
Niacin	10 mg
Biotin	25 mcg
Sarphuntra	47.5 mg
Bhumiamlika	43.75 mg
Aruna	33.75 mg
Yavalika	31.25 mg
Nimfa	25 mg
Silymarin	100 mg



Packing:
1 Ltr & 500 ml.

*Liver Protector
&
Antioxidant
Tonic*

INDICATIONS :

- Poor digestion and absorption of nutrients
- Poor production and performance
- Low feed conversion
- Poor weight gain
- Lower immunity
- Fatty liver
- Hepatitis

Cattle Feed Supplement





RespiWell

COMPOSITION:

Adhatoda Vasica	Calotropis Provera
Ephedra Gerardiana	Pistacia Integerrima
Hedychium Spicatum	Zingiber Officinale
Solanum Xanthocarpum	Piper Nigrum
Cassia Occidentalis	Piper Longum
Saussurea Lappa	Ocimum Sanctum Extract
Alpinia Galanga	Eucalyptus Globulus
Terminalia Bellirica	Thymus Vulgaris
Glycyrrhiza Glabra	Mentha Piperita
Eucalyptus Globulus	Menthol
Acorus Calamus	Cinnamomum Camphora
Abies Webbiana	Emulsifying Base

FEEDING SCHEDULE:

Cow, Buffalo & Horse: 25 ml twice daily

Calf/Foal, Sheep, Goat & Pig: 15 ml daily

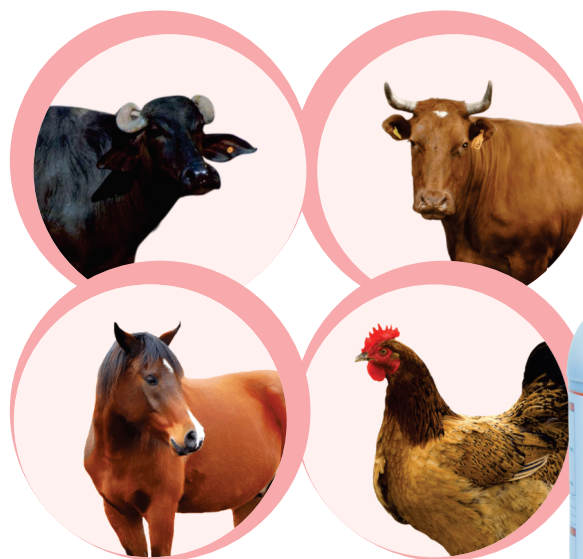
Poultry (per 100 birds):

Chicks: 5 ml

Growers & Broilers: 10 ml

Layers & Breeders: 15 ml

Liquid Feed Supplement for Soothing of Respiratory Tract



Packing:
250 ml & 500 ml.

ADVANTAGE:

- Supports Ease in Respiration
- Keeps the Respiratory System Free From Mucus
- Acts as an Anti-inflammatory and Decongestant
- Facilitates Easy Breathing During Changing Weather
- Reduces the Risk of Stress and Pain
- Helps Control Respiratory Symptoms During Outbreaks of CRD, Infectious Coryza, and Other Respiratory Diseases



Anti-Stress Formula

Cures CRD

Anti-Cough Tonic

ANIMAL FEED SUPPLEMENT

Specialized Formula to Aid Animals with
Respiratory Issues Such as Coughs and Colds



COMPOSITION:

Beta Carotene	Iodine
Vitamin E & K	Cobalt
Chelated Zinc	Selenium
Chelated Copper	Bioactive Chromium
Chelated Manganese	Omega Fatty Acids

FEEDING SCHEDULE:

To Improve Heat:

1 Bolus for 10 Days During the Cycle

To Improve Conception Rate:

1 Bolus for 10 Days Before and After A.I.

INDICATIONS:

- ✓ Infertility ✓ Anoestrus ✓ Hoof Health
- ✓ Silent Heat ✓ Delayed Ovulation
- ✓ In Repeat Breeding ✓ Wound Healing
- ✓ Improved Synthesis of Reproductive Hormones

CATTLE FEED SUPPLEMENT

CATTLE FEED SUPPLEMENT
NOT FOR HUMAN USE
NOT FOR MEDICINAL USE

REPROBEST

HEAT INDUCER BOLUS



UPGRADED FORMULA

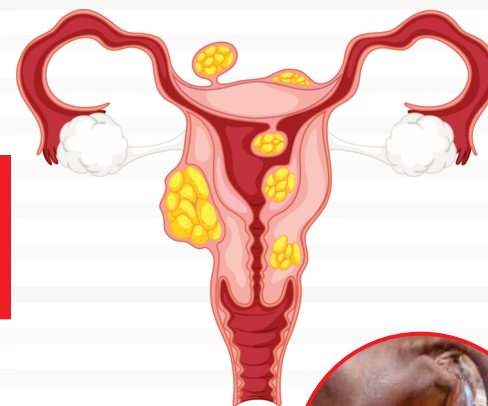


10
Bolus



UTRO-FLUSH

Herbal Uterine Tonic



FEEDING SCHEDULE :

Cows & Buffalo : 100 ml. twice daily for 3-5 days

Sheep/Goat : 30-40 ml. twice daily for 3-5 days

in case of retained placenta

Give 200 ml. & repeated every 3 hr. until the Placenta expelled out.

EACH 5ML OF CONTAINS :

Citrullus colocyntis	250 mg
Hemidesmus indicus	10 mg
Hibiscus rosa sinensis	10 mg
Acacia catechu	10 mg
Holarrhena antidysenterica	5 mg
Embelia ribes	5 mg
Tinospora cordifolia	5 mg
Aristolochia indica	250 mg
Cedrus deodara	150 mg
Dashmool	100 mg
Syzygium cuminii	40 mg
Asparagus racemosa	40 mg
Glycyrrhiza glabra	15 mg
Azadirachta indica	15 mg
Ceiba pentandra	10 mg
Sida corodifolia	10 mg
Withania somnifera	40 mg
Symplocos recemosa	20 mg
Terminalia chebula	20 mg
Terminalia bellirica	20 mg
Phyllanthus emblica	20 mg
Phyllanthus niruri	15 mg
Calcium	100 mg
Phosphorus	50 mg
Syrupy base	q.s.

- Ecboic
- Uterus Cleaning
- Retention of Placenta



BENEFITS :

- Induces Heat in cow & Buffaloes
- Maintains proper & timely involution of uterus
- Helps in timely expulsion of placenta
- Post-partum cleansing of uterus.
- Useful in ROP cases

लाभ :

गाय और भैसों में गर्मी उत्पन्न करता है।
गर्भाशय को संकुचित बनाए रखता है।
समय से जेर को निकालने में मदद करता है।
प्रसव के बाद गर्भाशय की सफाई करता है।
अटकी हुई जेर में उपयोगी।

Cattle Feed Supplement

Packing: 1 Ltr & 500 ml.